

## Traveling from abroad to IMD Ltd.

For visitors from abroad we recommend to fly either to Zurich Airport (ZRH) or to Geneva Airport (GVA). Both Airports are approximately within the same distance from IMD Switzerland.

From both Airports, we recommend you to take the train to Biel/Bienne main station. The journey by train takes about an hour and a half.

After Arriving by train at Biel/Bienne main station, we recommend to hire a taxi to our location or call IMD for a pickup service.

Should you prefer to rent a car read “How to reach us by car” below for directions.

### From Zürich Airport:

- Drive on highway A1 direction Bern (approx. 100 km)
- **Exit** at the exchange “**Luterbach**” onto **highway A5 direction Biel/Bienne**
- Drive on **highway A5** until the **Exit Brügg** (approx. 30 km)
- From **Exit Brüggmoos Brügg** follow the road **as per map on the next page**

→ How to find us – [Google Route Description](#)

### From Geneva Airport:

- Drive on **highway A1/E25/E62 direction Lausanne** (approx. 65 km)
- **Exit** at the exchange **Ecublens** onto **highway A1/E25/E23 direction Yverdon-les-Bains** (approx. 20km)
- **Exit** at the exchange **Yverdon** onto **highway A5 direction Neuenburg/Neuchâtel**
- Drive on **A5/ 6 direction Bern** until the **Exit Brüggmoos Brügg** (approx. 70 km)
- From **Exit Brüggmoos** follow the road **as per map on the next page**

→ How to find us – [Google Route Description](#)

### From Biel/Bienne main station:

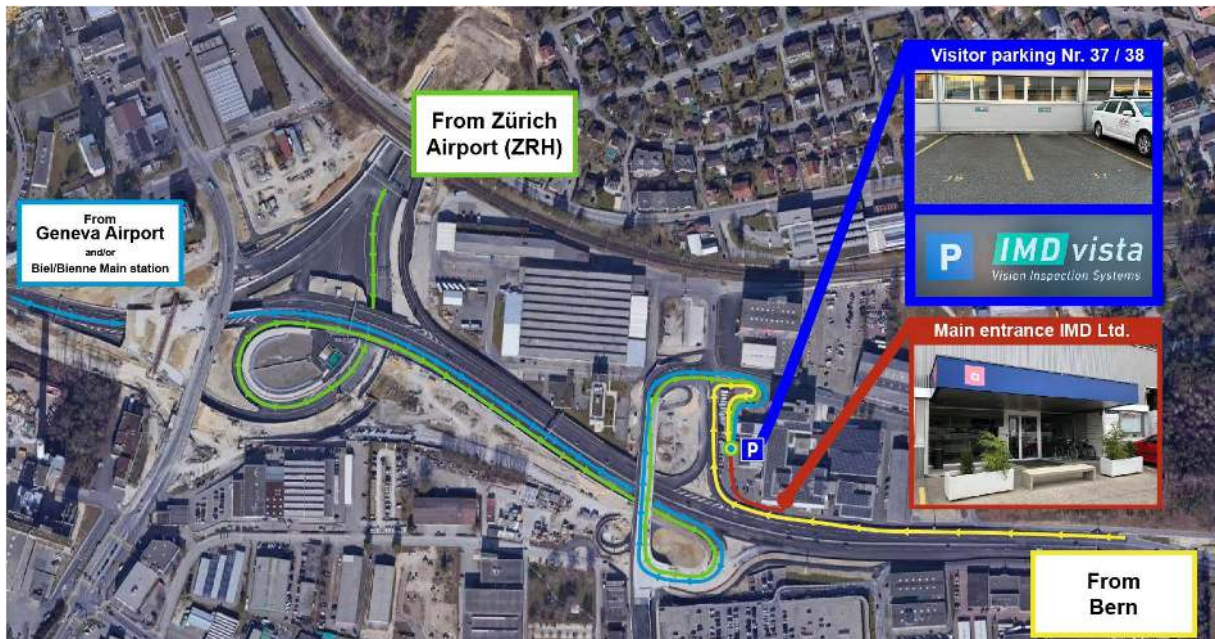
- Drive on **highway A5/ 6 direction Bern** until **Exit Brüggmoos** (approx. 5 Km)
- From **Exit Brüggmoos Brügg** follow the road **as per map on the next page**

→ How to find us – [Google Route Description](#)

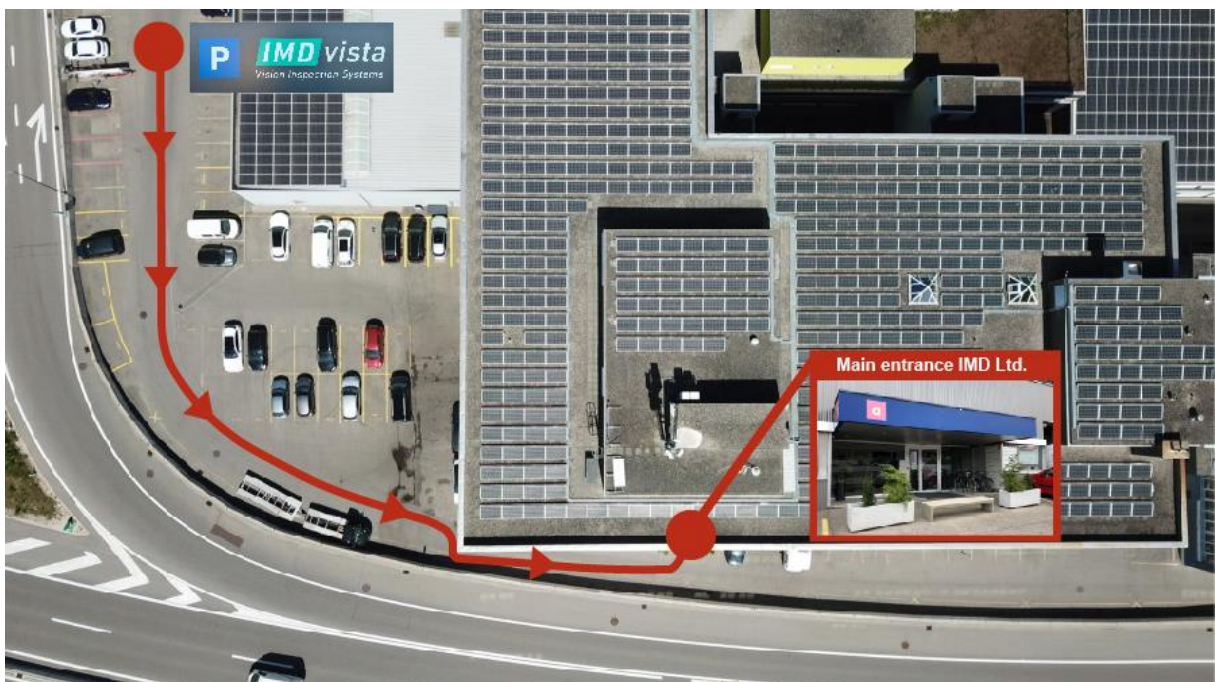
### IMD Address:

IMD Ltd.  
Industriestrasse 37A  
2555 Brügg - Switzerland

## Detail map for visitors by car



## Detail plan walkway from parking to main entrance



## Main Entrance



Take the blue elevator to the fourth (4<sup>th</sup>) floor



You reached IMD Ltd. We warmly welcome you!

