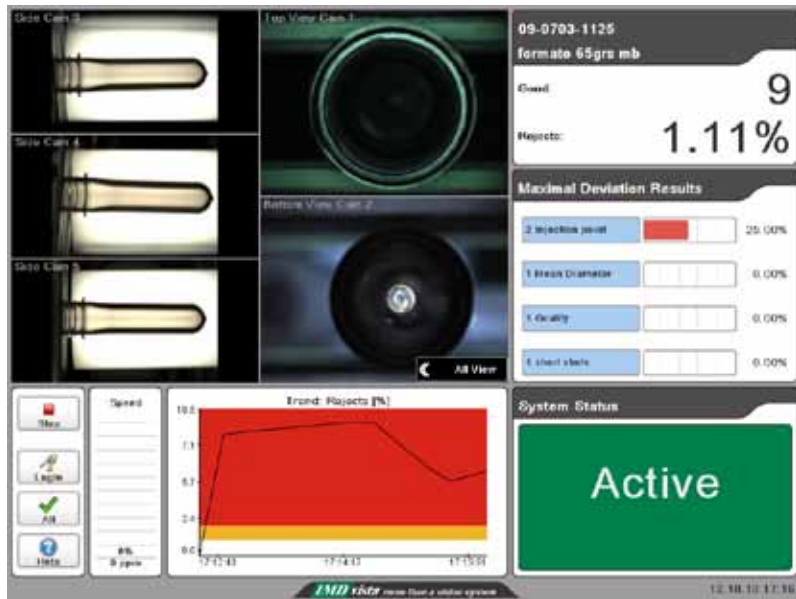


IMDvista® The new Generation of Vision Software

Swiss Made

IMDvista® More than just a Vision System

See the new Generation of Vision Software by IMDvista®
at the K 2010 show in Düsseldorf for the first time in Europe



BASIC Display of IMDvista® Vision Software

Details see page 11 or click in "K 2010" on the right.

[Click here to navigate](#)

“Fast overview, easy to understand and simple to use ... congratulations, it was worthwhile waiting for this revolutionary new generation of Vision Software.”

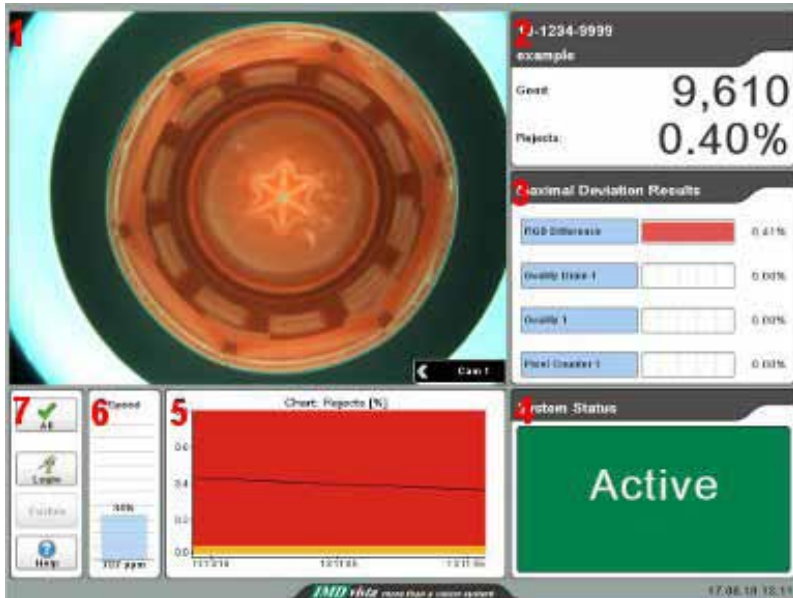
Comment from a user

IMDvista® The new Generation of Vision Software

Swiss Made

IMDvista® More than just a Vision System

BASIC Screen for fast Overview



- Live Image** – as it is taken by the camera
> color image as always with IMDvista® so you see the “real thing”
- Name** – of the running project, **Good** – parts produced, **Rejects** – in Percent
- Most deviations** - Values that are tested
> you know immediately where to intervene
- Status** of the System (**Active** – **Alarm** – **Pre Alarm** – Stopped) > even from far you see if everything is OK.
- Chart of Rejects** > you can follow the trend immediately > did your intervention improve the trend?
- Actual Speed** of the system > does the system run at target speed for expected efficiency?
- Login** to the System with password for different user levels and “Change traceability”

➔ [Click here to navigate BASIC Screen](#)

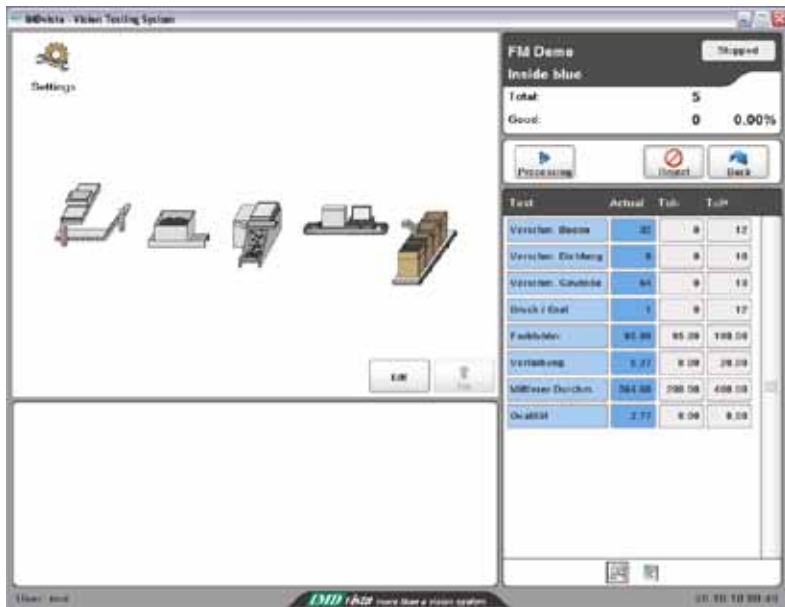
IMDvista® The new Generation of Vision Software

Swiss Made

IMDvista® More than just a Vision System

CONFIG Center – Management of the Settings of all Connected Components.

Overview of all Components



Settings for the Camerasystem



Click here to navigate

CONFIG Center

- _ **Easy to understand** > because of pictograms
- _ **Easy and flexible adjustments** > even applicable for non specialized users
- _ **Full control and overview** for the whole system > no necessity to switch between several displays and PLC's, etc.

“As you do not use the Config Center every day, it has to be simple and clear in guiding you to the desired settings very easily, IMDvista® fulfils that requirement.”

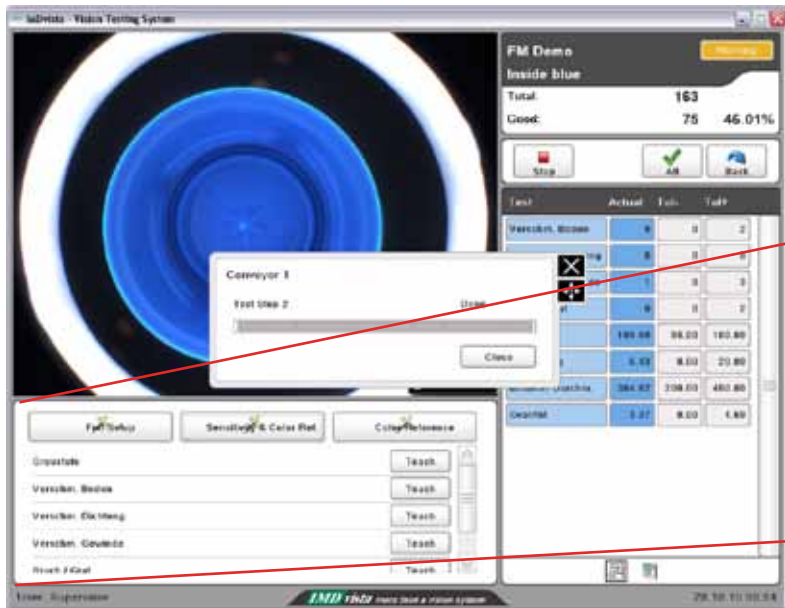
Comment from a Shift leader

IMDvista® The new Generation of Vision Software

Swiss Made

IMDvista® More than just a Vision System

SELF TEACH-IN Function



Click here to navigate

SELF TEACH-IN Function
STATISTIC Display

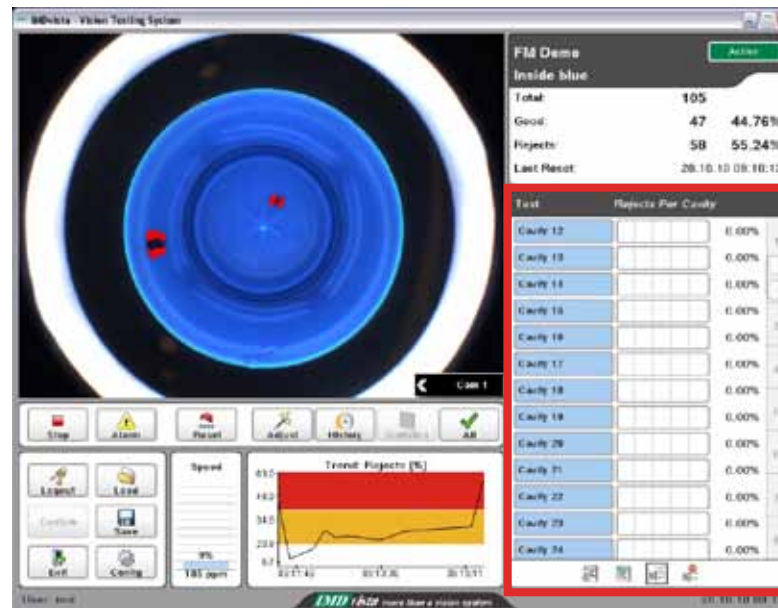
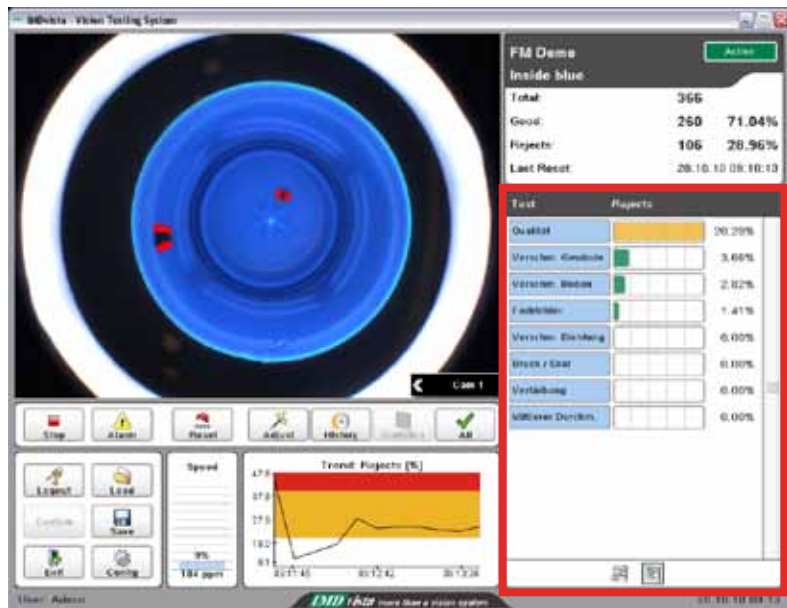
- _ Teach-In with the click on a button > no need of operators with specialized skills
- _ Simple tolerance > handling system
- _ Advanced user > login for full access to vision library

IMDvista® The new Generation of Vision Software

Swiss Made

IMDvista® More than just a Vision System

STATISTIC Display



Click here to navigate

STATISTIC Display

- _ **Summary of defects** > what is the problem overall
- _ **Trend display** > fast overview checking your interventions results

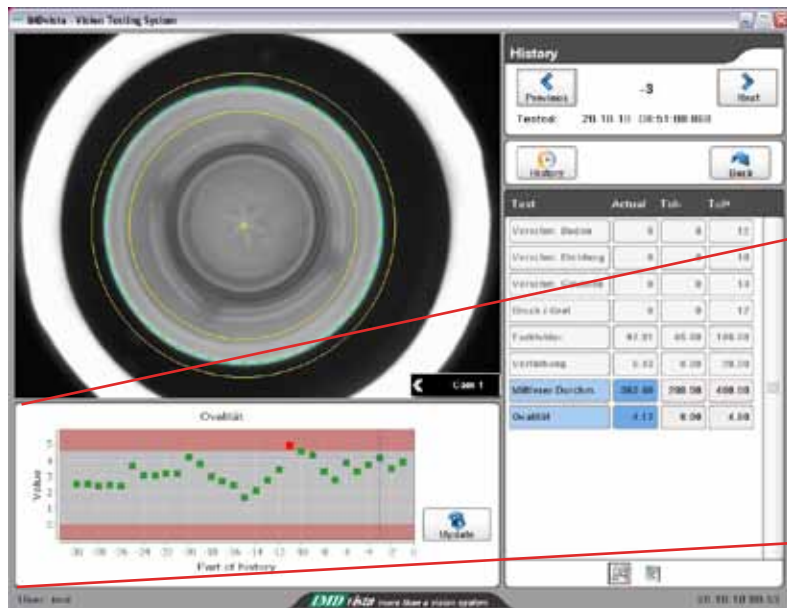
- _ **Defect per Cavity** > what is the problem specifically

IMDvista® The new Generation of Vision Software

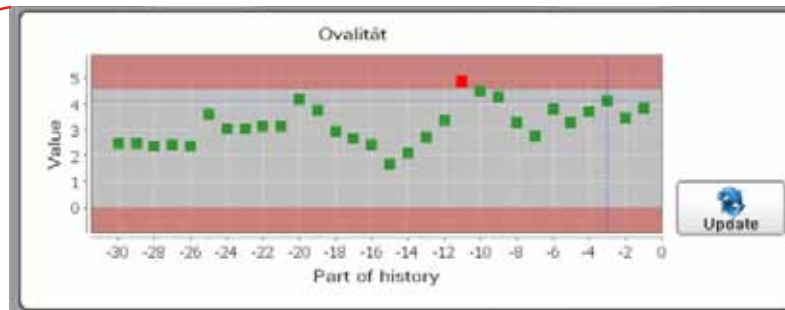
Swiss Made

IMDvista® More than just a Vision System

HISTORY Function



Click here to navigate



HISTORY Function

- _ **Adjust tolerances on the run** > checks influence of changes before adapting to running system
- _ **Analyzing of rejects** > how does the defect look like > how can you correct the defect
- _ **Check calibration** of your system
 - > no need to collect samples

IMDvista® The new Generation of Vision Software

Swiss Made

IMDvista® More than just a Vision System

HELP Function



Click here to navigate

Are you interested and want to see and know more details?

Do you have any further questions?

Interested to see the LIVE presentation?

Come and see us at the [K 2010 in Düsseldorf](#) (read details on the next page)

HELP Function

- _ [Extensive Help Screen](#) > press the screen when ever you have a question
- _ [Multilingual](#) > switch between languages
- _ [Digital Manual](#) > in the system where you will need it

IMDvista® The new Generation of Vision Software

Swiss Made

IMDvista® More than just a Vision System

IMDvista® Portal – Connect your production floor to the office



IMDvista® Portal keeps you informed about the performance of all your IMDvista® Vision Systems and the connected production lines. The system calculates real-time Key Performance Indicator (KPI) and shows the current status of any IMDvista® System in the network. It also keeps record your history.

[Click here to navigate](#)

PORTAL

“And the best after all: when you start the system it will automatically discover any IMDvista® system on the network. So you are up and running in minutes.”

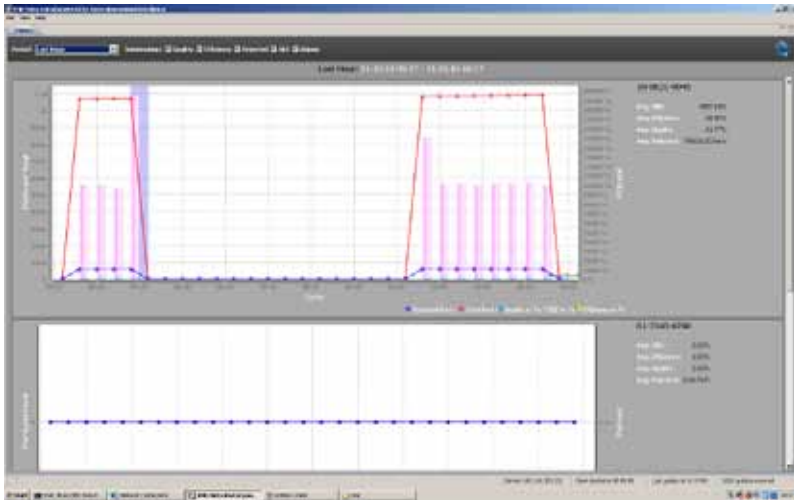
Comment from a user

IMDvista® The new Generation of Vision Software

Swiss Made

IMDvista® More than just a Vision System

FACTS to the IMDvista® Portal



HISTORY Screen

fast Overview to all your IMDvista® Systems
Trace your production

Functionalities & Benefits

- _ Visualize any number of IMDvista® Vision Systems
- _ Real-time KPI calculation (OEE, Efficiency, Quality, Availability*)
- _ Recording of historic performance data
- _ One-click remote access to the connected vision systems utilizing the IMDvista® client
- _ Overall status monitoring
- _ Vision Discovery: automatically connect to IMDvista® systems on the network (plug & play)
- _ Zero configuration setup (takes less than one hour to install the complete system)

[Click here to navigate](#)

PORTAL

Technical data

- _ Client operating system: Microsoft Windows XP or later
- _ Server operating system: Microsoft Windows 2000 Server or later
- _ Utilizing Java Web Start for the portal clients

IMDvista® The new Generation of Vision Software

Swiss Made

IMDvista® More than just a Vision System

Interview with Matthias Hermle, CEO of IMD Ltd. founded in 1996.

Q - What were your main considerations for the development of a new IMDvista® Vision Software?

A - Integration of the most advanced Software technologies to achieve a flexible and efficient application. IMD wants to reach a **new level of perfection** possible only with the newest technologies.

 [Click here to navigate](#)

Q - What technology do you use?

A - Having different technical needs for different parts of the Applications we had to integrate different technologies to cover the demand. The various applications forced us to develop a highly structured Software and to unite the skill and experience of our entire team.

Q - Who developed the new Software?

A - IMD's own Software Engineers have written the Software and our Sales, Technicians and Service Personal have contributed with their experience and market knowledge to the endeavor. The Software is 100 percent SWISS MADE.

Q - Made in Switzerland sounds pretty expensive, correct?

A - We have a very efficient team of Software Engineers. The cost of Software development has to be seen in the perspective of "What do you get, in what time and in what quality and reliability".

INTERVIEW

Q - Did you use the support of an Industrial Designer for the IMDvista®Vision Software?

A - Yes we did, we wanted the IMDvista®Vision Software to look great, clear and easy with a straight forward concept and an unique "look and feel".

Q - Is the new IMDvista®Vision Software compatible with existing systems?

A - Partially yes: Existing systems with original IMD Software are upgradeable, depending on the existing Hardware we offer two different Upgrade Kits. Ask us for a quotation.

Thank for your attention and looking forward seeing you in Düsseldorf.

IMDvista® The new Generation of Vision Software

Swiss Made

IMDvista® More than just a Vision System

Visit IMDvista® at the K2010 in Düsseldorf (Oct. 27th – Nov. 03rd 2010)



- **Engel Austria GmbH**
Hall 15 / Booth C58
Full Electric Machine with 96 Cavity Mould with low cycle times with an
IMDvista® Complete System Solution
- **Sumitomo (SHI) Demag Plastics Machinery GmbH**
Hall 15 / Booth D22
New EL-Exis SP 300 Series with 72 Cavity Mould
IMDvista® Complete System Solutions
- **StackTeck Matrix Systems Ltd.**
Hall 1 / Booth D09
Laser printer integrated into an
IMDvista® Vision System

[Click here to navigate](#)

K 2010